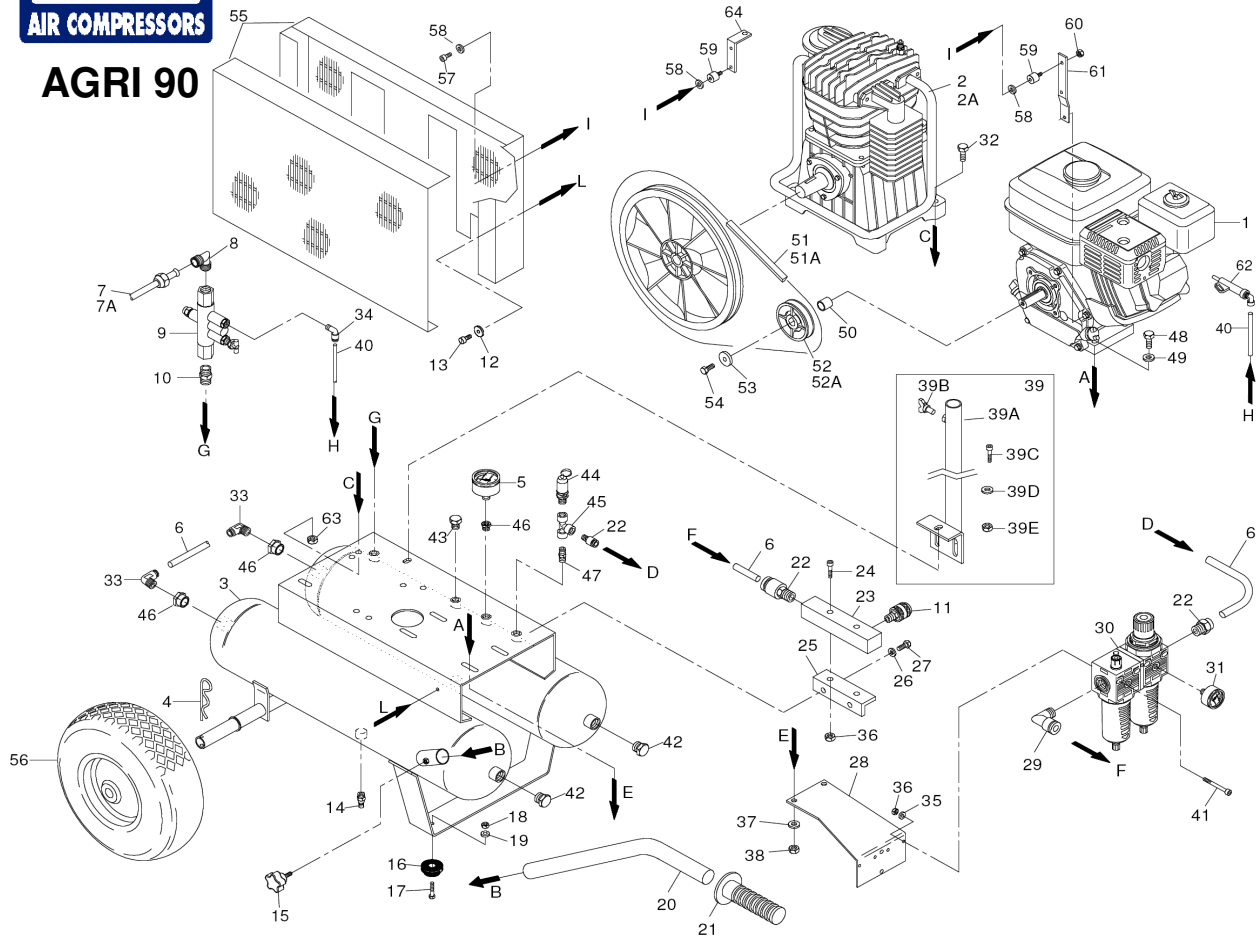




AGRI 90



VALID FROM 21/10/2008 - VALIDO DAL 21/10/2008 (REV-01)

REF. RIF.	CODE CODICE	QT	DESCRIPTION DESCRIZIONE	REF. RIF.	CODE CODICE	QT	DESCRIPTION DESCRIZIONE
1	7385220000	1	Petrol engine <i>Motore a scoppio 9 Hp</i>	39	4083650000	1	Hose rill kit <i>Kit arrotola tubo</i>
2	3020811000	1	Pumping head <i>Gruppo pompante AB 671</i>	39A	5165800008	1	Support <i>Staffa arrotola tubo</i>
2A	3020521000	1	Pumping head <i>Gruppo pompante AB 550</i>	39B	7011410000	1	Screw <i>Vite ad aletta M8x20</i>
3	5151060008	1	Tank <i>Seratoio</i>	39C	7011090000	3	Screw <i>Vite TE M8x20</i>
4	7040190000	2	Circlip <i>Copiglia</i>	39D	7020240000	3	Nut <i>Dado M8c/flangia</i>
5	7110140000	1	Pressure gauge <i>Manometro</i>	39E	7030030000	3	Washer <i>Rondella Ø8</i>
6	7230030000	1	Rilsan hose <i>Tubo rilsan</i>	40	7230010000	1	Rilsan hose <i>Tubo Rilsan</i>
7	7232460000	1	Infeed tube <i>Tubo alimentazione (AB671)</i>	41	7014330000	4	Screw <i>Vite TCCI M5X60</i>
7A	7232460000	1	Infeed tube <i>Tubo alimentazione (AB500)</i>	42	7090030000	2	Plug <i>Tappo</i>
8	7080160000	1	Joint <i>Raccordo</i>	43	7090090000	1	Plug <i>Tappo</i>
9	7195170000	1	Automatic unloading <i>Disgiuntore</i>	44	7192090000	1	Safety valve <i>Valvola di sicurezza</i>
10	7081170000	1	Joint <i>Raccordo</i>	45	7082010000	1	Joint <i>Raccordo</i>
11	7130570000	4	Tap <i>Rubinetto</i>	46	7085080000	1	Joint <i>Raccordo</i>
12	7030010000	4	Washer <i>Rondella .D.5 UNI 6592 ZINC.</i>	47	7085270000	1	Joint <i>Raccordo</i>
13	7012090000	10	Screw <i>Vite trilobata TC 5X12 CROSS</i>	48	7011310000	4	Screw <i>Vite TE M8X45 ZINC</i>
14	7130160000	2	Discharge tap <i>Rubinetto spurgo</i>	49	7030120000	2	Washer <i>Rondella .D.8X24X2 ZINC.</i>
15	7014100000	2	Screw <i>Vite ad alette M8X20 UNI5449</i>	50	7062500000	1	Spacer <i>Distanziale</i>
16	7360250000	2	Rubber <i>Gommino</i>	51	7371020000	1	Belt <i>Cinghia trap. 3V 630 (AB 671)</i>
17	7011100000	2	Screw <i>Vite TE M8X25</i>	51A	7370230000	1	Belt <i>Cinghia SPZ 1637 (AB 550)</i>
18	7021030000	2	Nut <i>Dado M.8 alto autoblocc.</i>	52	7406830000	1	Pulley <i>Puleggia (AB 671)</i>
19	7030120000	2	Washer <i>Rondella ROND.D.8X24X2</i>	52A	7408490000	1	Pulley <i>Puleggia (AB 550)</i>
20	7398510000	2	Handle <i>Manico</i>	53	7152000000	1	Washer <i>Rondella</i>
21	7280030000	2	Handle <i>Manopola</i>	54	7011300000	1	Screw <i>Vite</i>
22	7084260000	3	Joint <i>Raccordo</i>	55	7240250000	1	Belt guard <i>Paracinghia</i>
23	7517320000	1	Mainfold <i>Ripartitore</i>	56	7260310000	2	Wheel <i>Ruota</i>
24	7010320000	2	Screw <i>Vite TCEI M5X25 ZINC.</i>	57	7011030000	2	Screw <i>Vite TE M6x10</i>
25	7459200000	1	Support <i>Supporto</i>	58	7038080000	4	Washer <i>Rondella</i>
26	7030020000	2	Washer <i>Rondella D.6 UNI 6592 ZINC.</i>	59	7364180000	2	Shock absorber <i>Antivibrante</i>
27	7011040000	2	Screw <i>Vite TE M6X20 UNI 5739 ZINC.</i>	60	7021010000	1	Nut <i>Dado M6</i>
28	7459190000	1	Support <i>Supporto</i>	61	5169160008	1	Support <i>Staffa paracinchia</i>
29	7084250000	1	Joint <i>Raccordo</i>	62	9102360000	1	Pneum. acelerator <i>Acceleratore Pneumatico</i>
30	7100770000	1	Filter reducer <i>Riduttore filtro</i>	63	7020250000	4	Nut <i>Dado M10</i>
31	7110240000	1	Pressure gauge <i>Manometro</i>	64	7456390000	1	Support <i>Staffa paracinchia</i>
32	7011980000	4	Screw <i>Vite TE M10x55</i>				
33	7081000000	2	Joint <i>Raccordo</i>				
34	7080140000	1	Joint <i>Raccordo</i>				
35	7030010000	4	Washer <i>Rondella .D.5 UNI 6592 ZINC.</i>				
36	7020050000	4	Nut <i>Dado M.5 UNI 5587 ZINC</i>				
37	7030030000	2	Washer <i>Rondella .D.8 UNI 6592 ZINC.</i>				
38	7020240000	4	Nut <i>Dado M.8 con flangia</i>				