

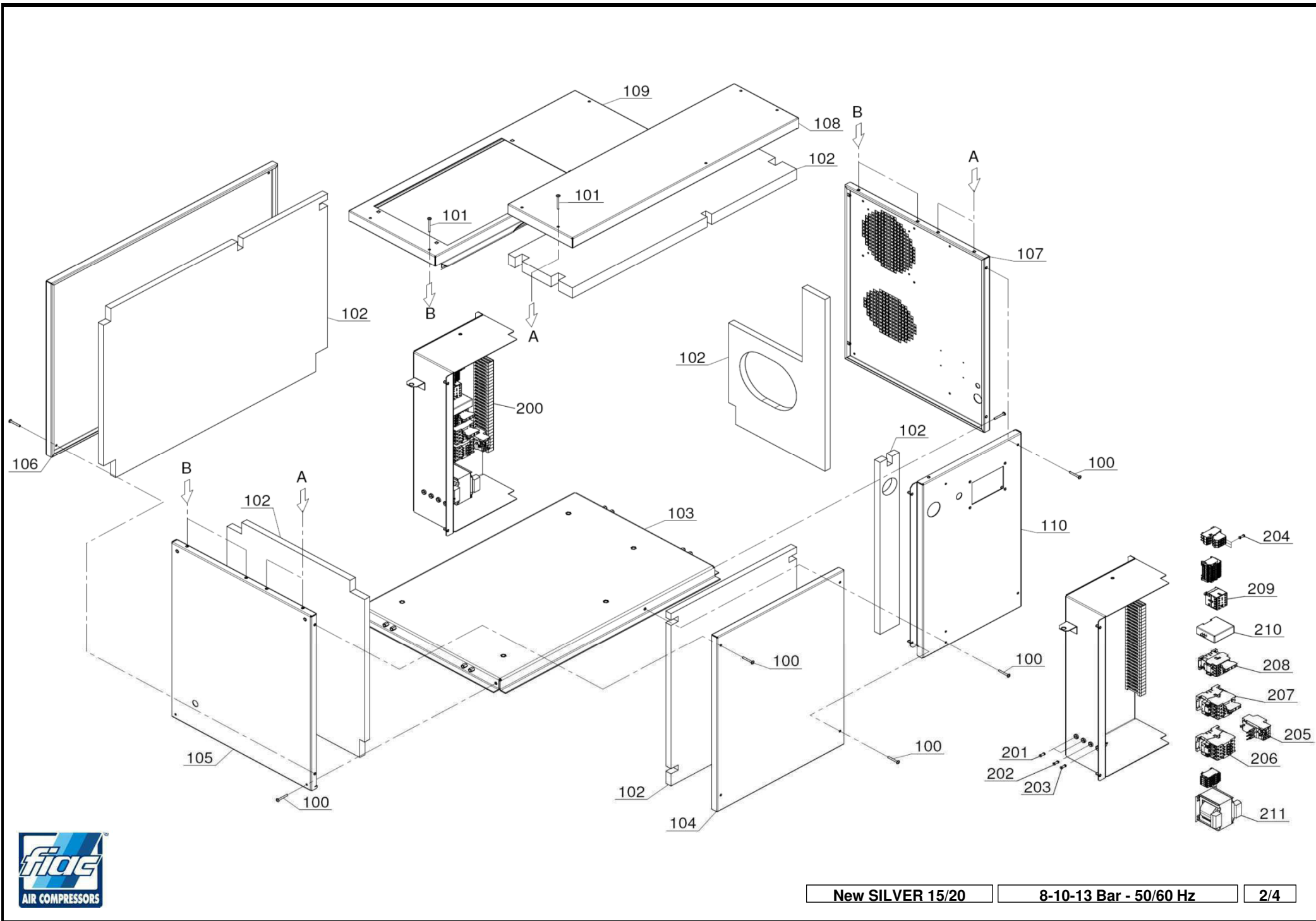


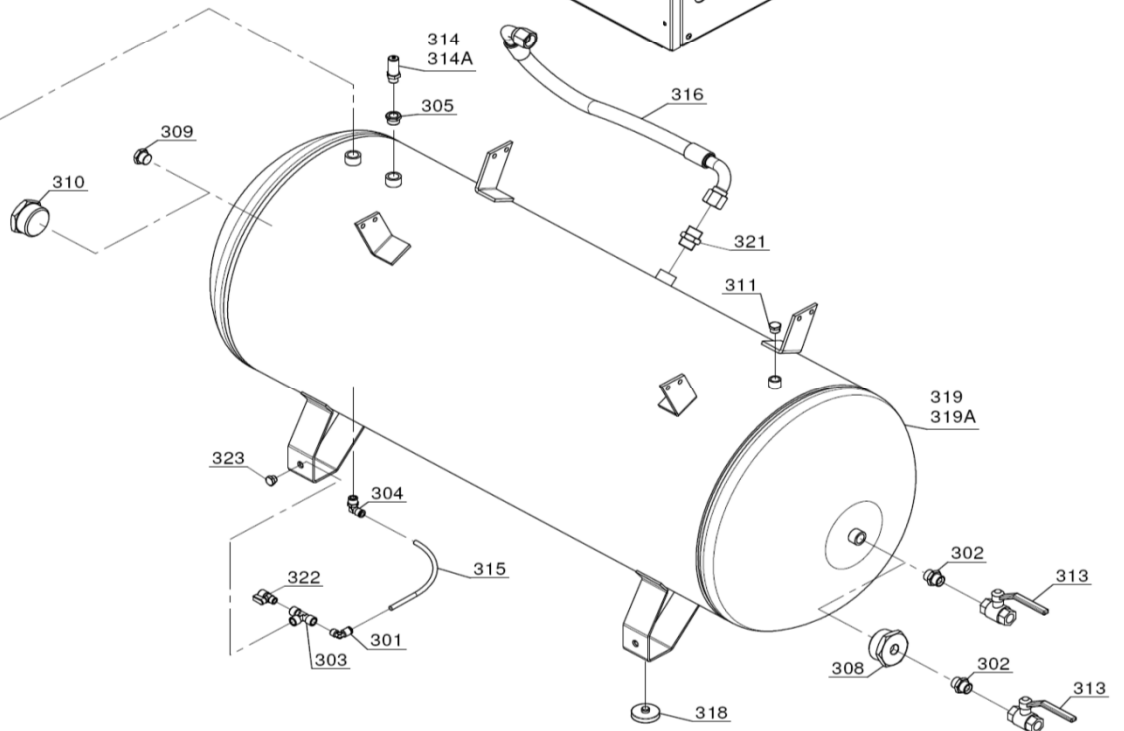
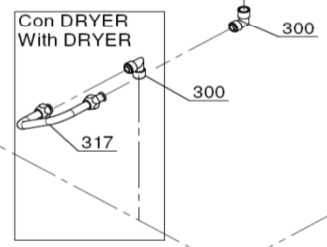
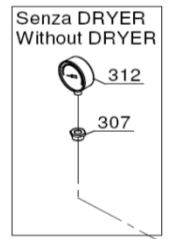
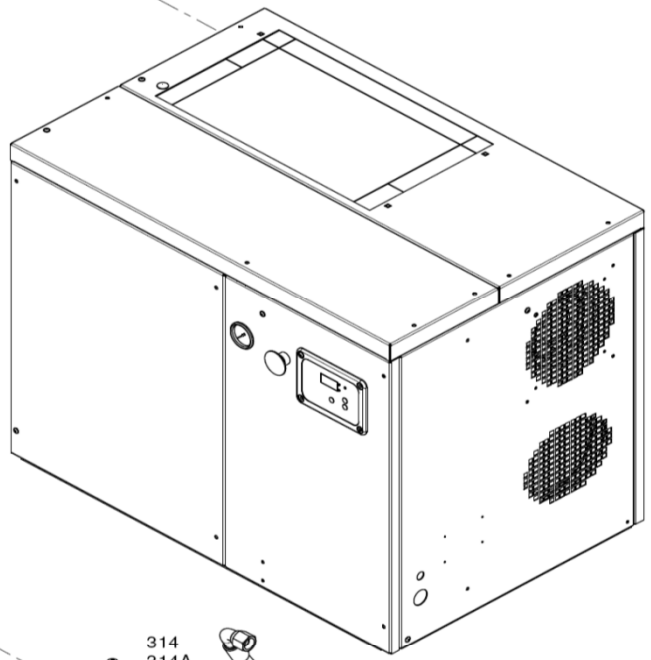
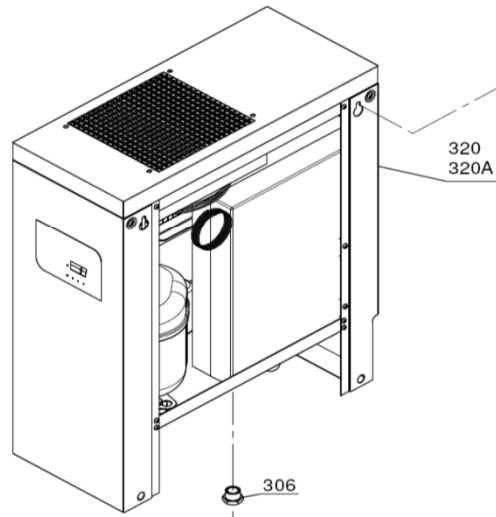
New SILVER 15-20	50/60 Hz	8 Bar	1/4
New SILVER 15-20	50/60 Hz	10 Bar	1/4
New SILVER 15-20	50/60 Hz	13 Bar	1/4

REF. RIF.	CODE CODICE	QT	DESCRIPTION DESCRIZIONE
1	5167430008	2	Foot <i>Piede Ssa-Silver/C Nero (versione a terra)</i>
2	7510071000	1	Base <i>Base Vite Mot.Newsilver 15-20 Nero</i>
3	6002500014	1	Joint <i>Racc."+" Fil. Fiff 1/4 Frl250</i>
4	x	8	Screw <i>Vite Te M8x20 Uni5739 (versione a terra)</i>
5	x	8	Screw <i>Vite Te M10x30 Uni 5739-65 Clas.8.8</i>
6	x	4	Screw <i>Vite Te M10x35 Zinc</i>
7	x	5	Screw <i>Vite Te M10x16 Uni 5739</i>
8	x	8	Screw <i>Vite Trilobata Tc 4x12 Cross</i>
9	x	4	Screw <i>Bullone T.Bomb+Quadro M8x30 5732-65</i>
10	x	12	Screw <i>Vite Tbf Cei M5x20 Uni 7380 Znn</i>
11	7510660000	1	Radiator <i>Radiatore Newsilver 15-20</i>
12	7566200000	1	Solenoid sensor <i>Sonda Temp.Ark 252-1002 Newsilver</i>
13	x	4	Nut <i>Dado M.4 Medio Uni 5588 Zinc</i>
14	x	4	Nut <i>Dado M5 Uni-5588</i>
15	x	4	Nut <i>Dado M.10 Uni 5588 Zinc</i>
16	x	4	Nut <i>Dado M.8 Esagon.C/Flangia Din.6923</i>
17	x	8	Washer <i>Rond.D.8 Uni 6592 (versione a terra)</i>
18	x	13	Washer <i>Rond.D.10 Uni 6592 Zinc</i>
19	x	8	Washer <i>Rond.D.10x30 Zinc</i>
20	x	8	Washer <i>Rond.D.4 Uni 6592 Zincata</i>
21	x	4	Washer <i>Rondella 6,4x18x1,5 Znb</i>
22	x	5	Washer <i>Rond.D.1/2" All</i>
23	x	2	Washer <i>Rond.D.3/8" All</i>
24	x	8	Washer <i>Rond.Dent.Est.D.8 Uni 3703 (versione a terra)</i>
25	7043140000	1	Clamp <i>Fascetta Metallica 40-60</i>
26	7081260000	2	Joint <i>Nipplo 1/2"X1/2" Svf</i>
27	7081311150	3	Joint <i>Nipplo 1/2"X1/2" Tubo Rame E27</i>
28	7082190000	1	Joint <i>Racc.Dir.M1/8"-6 Calzamento</i>
29	7083290000	1	Joint <i>Racc."L" F1/8"-6 Calzamento</i>
30	7083310000	1	Joint <i>Racc."L" M1/4"-6 Calzamento</i>
31	7085230000	1	Joint <i>Rid 1/4-1/4 Mf F Cil Zinc</i>
32	7085540000	2	Joint <i>Nipplo 1/2"X3/8" Svf</i>
33	7085700000	1	Joint <i>Rid.1/2"-1/2"Fi Znb</i>
34	7085740000	1	Joint <i>Riduzione M1/8"Con.Xf1/4"</i>
35	7086720000	1	Joint <i>Racc.Dir.M1/4"-6 Calzamento</i>
36	7110400000	1	pressure gauge <i>Man.D.50 1/8-Incasso F/S=16-Imp.</i>
37	7130090000	1	Discharge tap <i>Rub Spurgo 1/4</i>
38	7201530000	1	Fan motor <i>El/Vent.Rad.S&P D250 V400/50-60hz/3</i>
39	7201530010	1	Fan grid <i>Griglia X Ventola Dry 8 Silver</i>
40	7201530020	1	Fan conveyor <i>Convogl.Ventola Rad.S&P D.250</i>
41	7211141150	1	Oil filter <i>Filtro Olio Ak10-15+V7-15+Tk "Fiac"</i>
42	7211960000	1	Oil/air filter <i>Filtro Disol.Tk-Tki+Ak10-15 "Fiac"</i>
43	7212160000	1	Air filter kit <i>Filtro Aria Completo Ak+V10-25</i>
43A	7212160010	1	Air Filter <i>Cartuccia Filtro Aria</i>
44	7214300000	1	Deadenig motor Panel <i>Pann.Fonoass.Motore Ns15-20</i>
45	7230010000	2	Rilsan hose <i>Tubo Rilsan 6x4 Nero</i>
46	7237040000	1	Rubber Infeed hose <i>Tubo Gom.Eq.1/2g Ff Mand.Ar.Ns15-20</i>
47	7237050000	1	Copper infeed hose <i>Tubo Rame D.14 Rad.Uscita Ns15-20</i>
48	7237070000	1	Rubber oil hose <i>Tub.Gom.Eq.1 1/2g Ff Man.Ol.Ns15-20</i>
49	7237130000	1	Rubber oil hose <i>Tubo Gom.Eq1 1/2g Ff Rit.Ol.Ns15-20</i>
50	7250690000	1	Pressure switch <i>Press.Danfoss Kp36 Ip Dif.2,5</i>
51	7360400000	4	Rubber <i>Piedino Gomma (versione a terra)</i>
52	7364190000	5	Shok absorber <i>Antivibr.D.40x30 Mf 10 45sh</i>
53	7370720000	2	Belt <i>Cinghia (New sil 15/50 Hz-8 bar)</i>

VALID FROM 01/08/2012 - VALIDO DAL 01/08/2012 (REV-03)

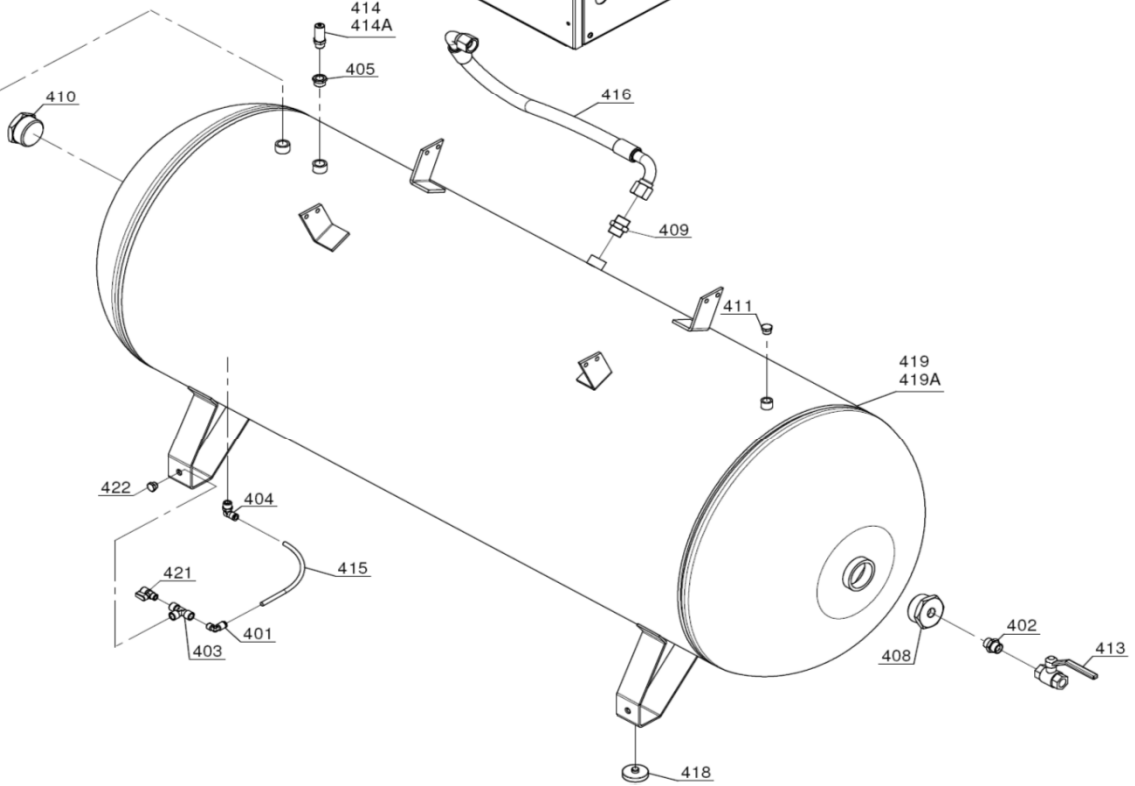
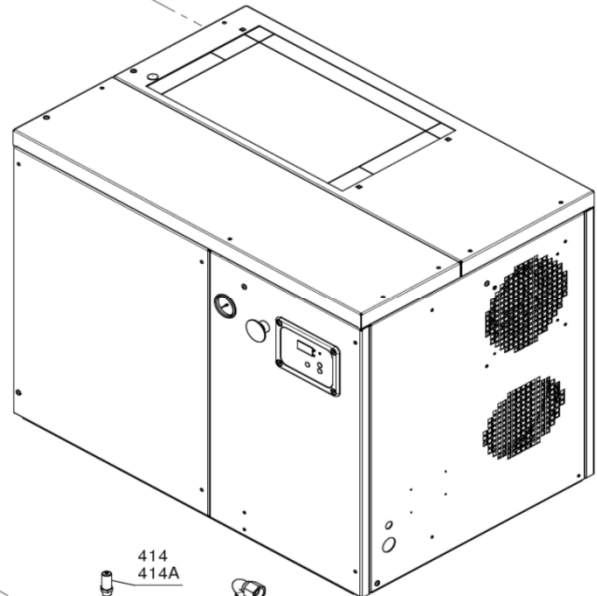
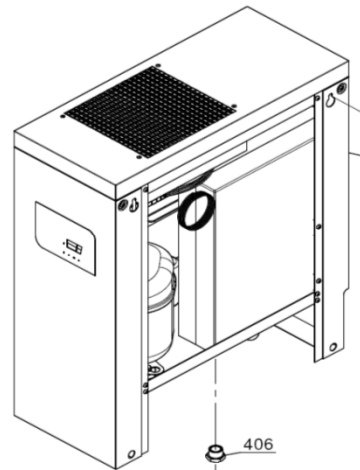
REF. RIF.	CODE CODICE	QT	DESCRIPTION DESCRIZIONE
53A	7370710000	2	Belt <i>Cinghia (New sil 15/50 Hz-10 bar)</i>
53B	7371350000	2	Belt <i>Cinghia (New sil 15/50/13 bar - 20/60/8 Bar)</i>
53C	7370011140	2	Belt <i>Cinghia (New sil 15/60 Hz-8 bar)</i>
53D	7371500000	2	Belt <i>Cinghia (New sil 15/60/10-13 bar)</i>
53E	7370670000	3	Belt <i>Cinghia (New sil 20/50/8-10 Bar)</i>
53F	7371580000	3	Belt <i>Cinghia (New sil 20/50/13 Bar)</i>
53G	7370850000	3	Belt <i>Cinghia (New sil 20/60/10 Bar)</i>
53H	7370990000	3	Belt <i>Cinghia (New sil 20/60/13 Bar)</i>
54	7385960000	1	Electric motor compressor <i>Motore elettrico compressore 400V / 50Hz (HP15)</i>
54A	7385950000	1	Electric motor compressor <i>Motore elettrico compressore 400V / 50Hz (HP20)</i>
54B	7383170000	1	Electric motor compressor <i>Motore elettrico compressore 220V / 60Hz (HP15)</i>
54C	7383180000	1	Electric motor compressor <i>Motore elettrico compressore 220V / 60Hz (HP20)</i>
54D	7385420000	1	Electric motor compressor <i>Motore elettrico comp. 230V ÷ 460V / 60Hz (HP15)</i>
54E	7385430000	1	Electric motor compressor <i>Motore elettrico compr. 230V ÷ 460V / 60Hz (HP20)</i>
57F	7385490000	1	Electric motor compressor <i>Motore elettrico compressore 380V / 60Hz (HP15)</i>
54G	7383100000	1	Electric motor compressor <i>Motore elettrico compressore 380V / 60Hz (HP20)</i>
54H	7383140000	1	Electric motor compressor <i>Motore elettrico compressore 230V / 50Hz (HP15)</i>
54I	7383150000	1	Electric motor compressor <i>Motore elettrico compressore 230V / 50Hz (HP20)</i>
55	7407120000	1	Motor Pulley <i>Puleggia mot. (New sil 15/50/8 bar)</i>
55A	7408021140	1	Motor Pulley <i>Puleggia mot. (New sil 15/50/10 bar)</i>
55B	7407590000	1	Motor Pulley <i>Puleggia mot. (New sil 15/50/13 bar)</i>
55C	7407730000	1	Motor Pulley <i>Puleggia mot. (New sil 15/60/8 bar)</i>
55D	7407550000	1	Motor Pulley <i>Puleggia mot. (New sil 15/60/10 bar)</i>
55E	7407010000	1	Motor Pulley <i>Puleggia mot. (New sil 15/60/13 bar)</i>
55F	7408760000	1	Motor Pulley <i>Puleggia mot. (New sil 20/50/8-10-13 bar)</i>
55G	7408730000	1	Motor Pulley <i>Puleggia mot. (New sil 20/60/8 bar)</i>
55H	7409900000	1	Motor Pulley <i>Puleggia mot. (New sil 20/60/10 bar)</i>
55I	7409160000	1	Motor Pulley <i>Puleggia mot. (New sil 20/60/13 bar)</i>
56	7406390000	1	Pump unit pulley <i>Pul. Gr.vite (New sil 15/50/8-10 bar)</i>
56A	7406410000	1	Pump unit pulley <i>Pul. Gr.vite (New sil 15/50/13 bar)</i>
56B	7408051070	1	Pump unit pulley <i>Pul. Gr.vite (New sil 15/60/8-10-13 bar)</i>
56C	7406420000	1	Pump unit pulley <i>Pul. Gr.vite (New sil 20/50/8 bar)</i>
56D	7406430000	1	Pump unit pulley <i>Pul. Gr.vite (New sil 20/50/10 bar - 20/60/8-10-13 bar)</i>
56E	7406400000	1	Pump unit pulley <i>Pul. Gr.vite (New sil 20/50/13 bar)</i>
57	7423370000	1	Pump unit <i>Gruppo vite</i>
58	4091040000	2	Emergency push botton <i>Pulsante a fungo di emergenza</i>
59	7433850000	1	Control panel <i>Scheda eletrtronica</i>
60	7456500000	1	Slide rails <i>Slitta tendicinghia</i>
61	7085530000	1	Joint <i>Riduzione 3/4x1/2 MM</i>
62	7120340000	1	Maintenance Oil <i>Olio per manutenzione</i>
63	4095000000	1	Maintenance Kit <i>Kit manutenzione</i>

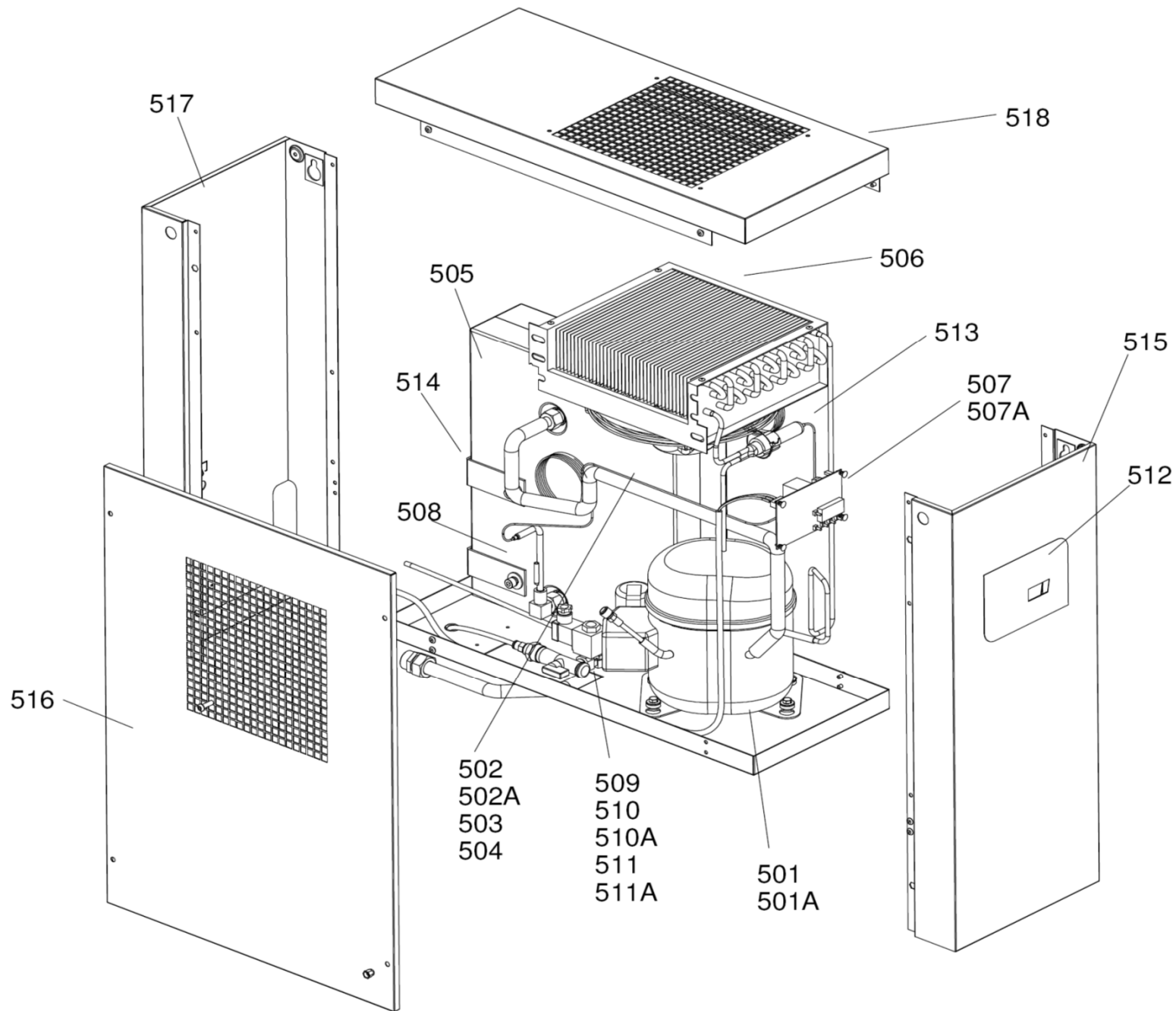




Senza DRYER
Without DRYER

Con DRYER
With DRYER





REF. RIF.	CODE CODICE	DESCRIPTION DESCRIZIONE
81	4095680000	Gaskets kit <i>Kit guarnizioni</i>
82	4095690000	Bearing Kit <i>Kit Cuscinetti</i>
83	4095700000	Minimum valve kit <i>Kit valvola di minima</i>
84	4095710000	Oil seal kit <i>Kit paraolio</i>
85	4095720000	Suction valve kit <i>Kit valvola aspirazione</i>
86	4095730000	Recovery oil hose kit <i>Kit recupero tubo olio</i>
87	4095740000	Flange kit <i>Kit flangia</i>
88	7196430000	Intake valve <i>Valvola di aspirazione</i>
89	4086400000	Solenoid Valve <i>Elettrovalvola</i>
90	7192930000	Safety valve <i>Valvola di sicurezza</i>
91	7423370020	Internal Joint <i>Raccordo interno</i>
92	7423310020	Oil Plug <i>Tappo livello olio</i>

