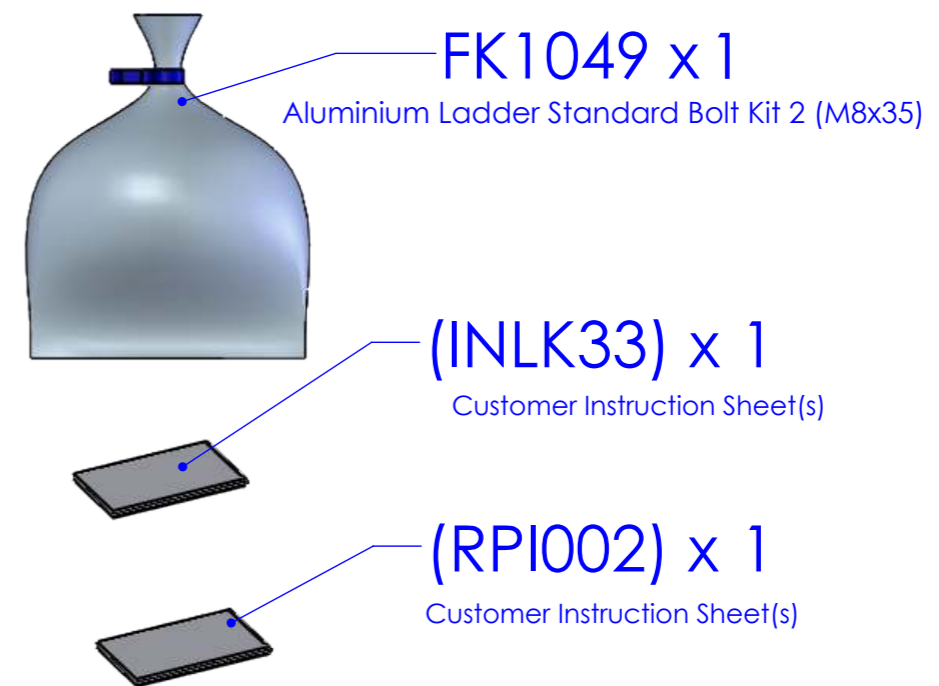
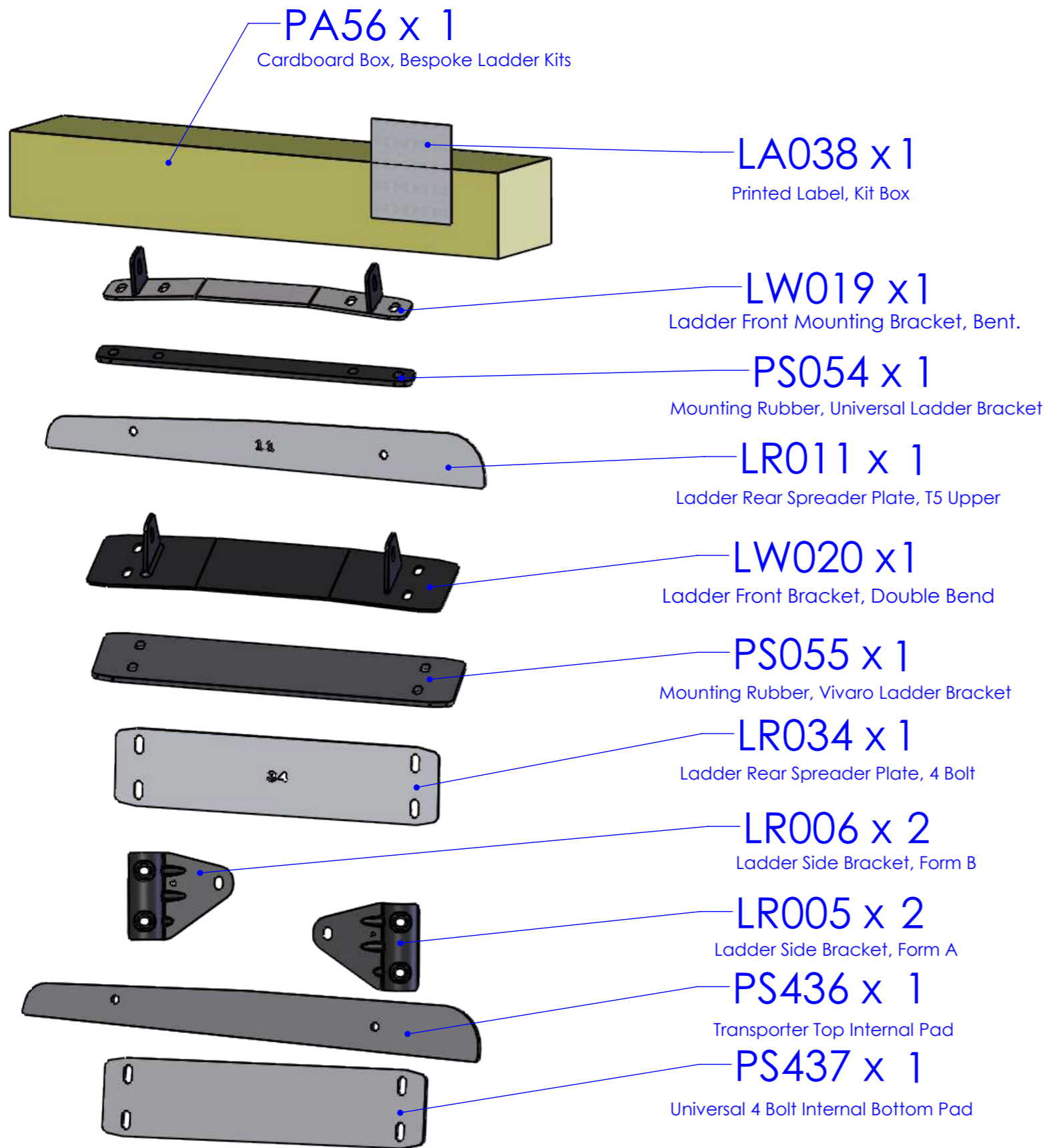


ISSUE:	DRAWN BY:	CHECKED BY:	CRF NO:	DATE:	DESCRIPTION:
a	JL	KB	2189	01/08/19	Aluminium ladder version of LK13.



MATING PARTS: n/a



DRAWING NO: LK33 (1 of 6)	DESCRIPTION: Aluminium Ladder Fitting Kit, T5 Low Roof		DESIGNED BY: J.Lowe 01/08/19
MATERIAL SIZE: n/a	MATERIAL SPEC: n/a	FINISH: n/a	WEIGHT: 4.78Kg
© NOTE: This drawing is the property of Rhino Products Ltd and must not be used or copied without written consent. The Rhino Products name and logo must remain clearly visible in any reproduction.			

IF IN DOUBT PLEASE ASK

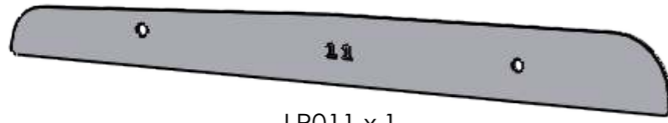
 THIRD ANGLE PROJECTION	
UNLESS OTHERWISE SPECIFIED: DIMENSIONS ARE IN MM	
0.00	±0.2
0.0	±0.5
ANG	±0.5°
DERIVED DIMENSIONS SHOWN IN BRACKETS	
<F> - CRITICAL FIT DIMENSION	
<S> - SAFETY CRITICAL DIMENSION	
DEBURR AND BREAK ALL SHARP EDGES	
SHEET SIZE A3	SHEET SCALE: 2:9



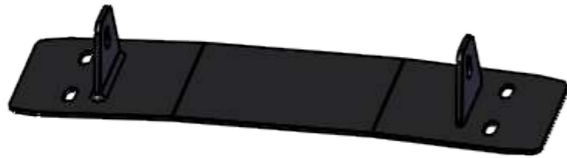
(LW019) x 1



PS054 x 1



LR011 x 1



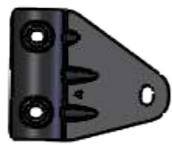
(LW020) x 1



PS055 x 1



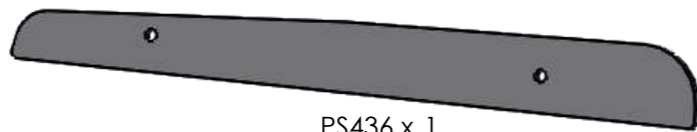
LR034 x 1



LR005 x 2



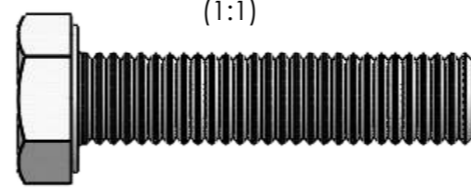
LR006 x 2



PS436 x 1

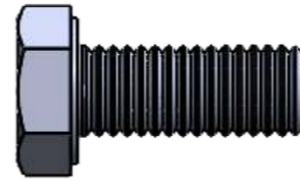


PS437 x 1

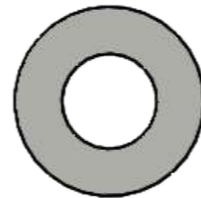


(1:1)

FS061 x 6



FS067 x 12



FW021 x 28



FN080 x 10



PS414 x 18



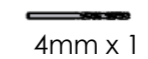
PS065 x 4



PS419 x 12



13mm x 2



4mm x 1



9mm x 1

