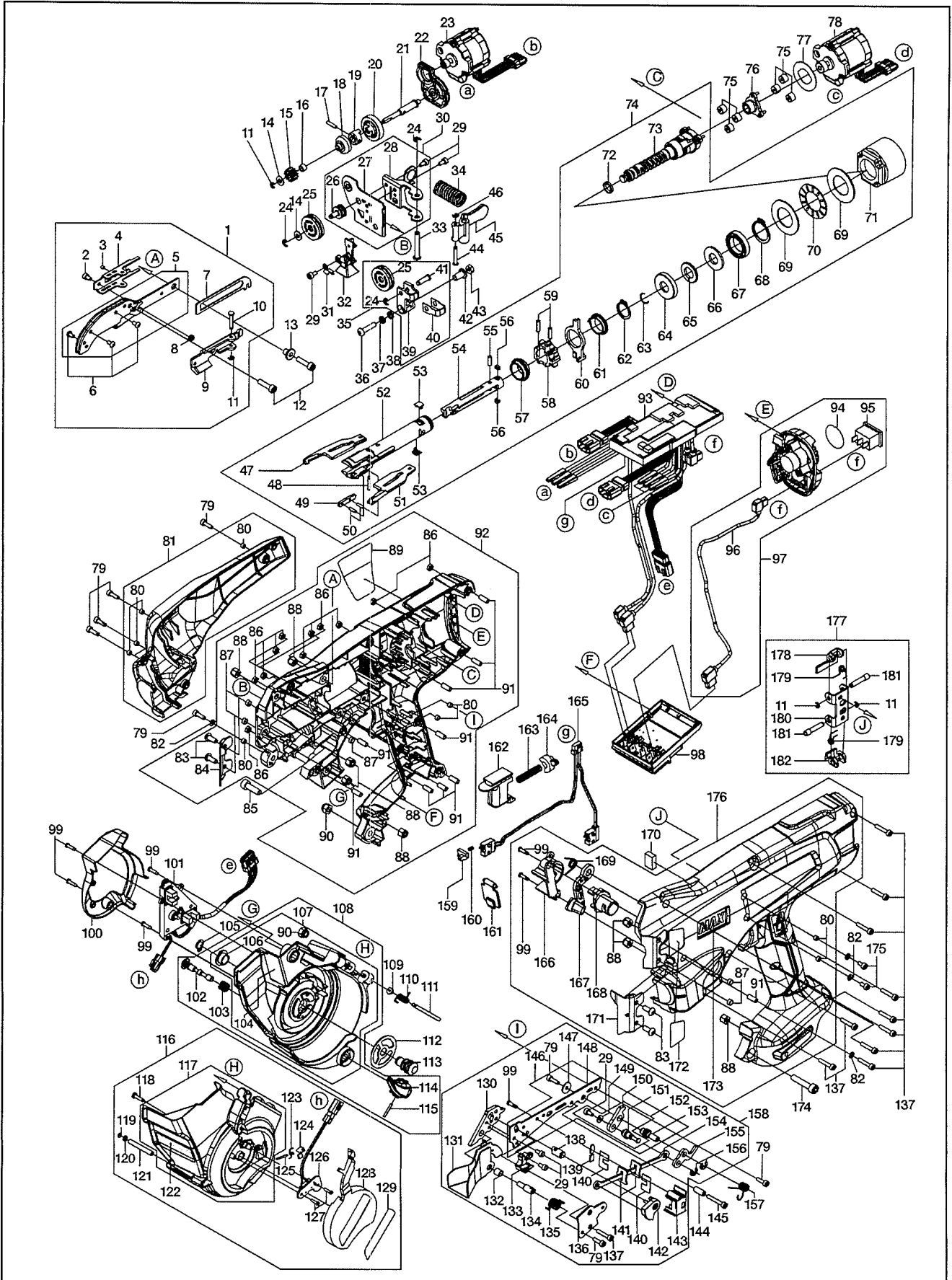


# RB441T(CE)

EXPLODED  
VIEW AND SPARE PARTS LIST

SCHEMA ECLATE ET LISTE DES  
PIECES DE RECHANGE

DESPIECE DE LA MAQUINA Y LISTA  
DE RECAMBIOS



Nr. CRT.	COD	DESCRIERE	OBSERVATII
1	RB70618	ARM A ASSY	
2	BB40481	BOLT 3X5	
3	AA71408	SCREW 3 X 3	
4	RB12633	WIRE GUIDE BASE	
5	RB81278	ARM A UNIT	
6	BB41714	BOLT 3X5 SG	
7	RB12636	WIRE GUIDE LEVER	
8	KK29117	COMPRESSION SPRING 9117	
9	RB70620	WIRE GUIDE UNIT	
10	FF41865	STEP PIN 1865	
11	JJ10113	E-RING 2.5	
12	BB40420	BOLT 4 X 16	
13	FF52115	HOLLOW PIN 2115	
14	EE39861	WASHER 4.3X9X1	
15	RB10770	FEED GEAR A	
16	FF51715	HOLLOW PIN 1715	
17	FF31559	PIN 1559	
18	RB12740	SHAFT COLLAR	
19	RB12653	CLUTCH B	
20	RB12651	CLUTCH A	
21	RB12652	FEEDING GEAR SHAFT A	
22	RB70700	FEEDING MOTOR BASE UNIT	
23	RB70627	FEEDING MOTOR	
24	JJ10514	E-RING 3 CF	
25	RB70625	FEEDING GEAR B UNIT	
26	RB12655	FEEDING GEAR SHAFT B	
27	RB70698	FEEDING GEAR BASE UNIT	
28	RB12658	SPRING BASE	
29	BB40824	BOLT 3X6	
30	RB81283	FEEDING GEAR BASE ASSY	
31	RB12659	LEAF SPRING	
32	RB70667	WIRE GUIDE C UNIT	
33	FF41867	STEP PIN 1867	
34	KK29119	COMPRESSION SPRING 9119	
35	RB81293	RELEASE LEVER A ASSY	
36	BB41712	BOLT 4X18 C	
37	EE11103	SPRING WASHER 2-4	
38	EE39825	WASHER 4.5X7.4X0.8	
39	RB12682	RELEASE LEVER A	
40	RB12683	RELEASE LEVER A CAP	
41	FF41869	STEP PIN 1869	
42	FF52117	HOLLOW PIN 2117	
43	CC42512	HEX NUT 1A M4	
44	FF41868	STEP PIN 1868	
45	RB12657	RELEASE LEVER B	
46	JJ10510	RETAINING RING 2.3	
47	RB12609	HOOK L	
48	RB12853	CARBIDE PIN 2.5X14.8	WAS=RB12613
49	RB12616	SLEEVE COVER	

50	FF21267	SPRING PIN 2X8	
51	RB12610	HOOK R	
52	RB12614	SLEEVE A	
53	RB12712	KEY	
54	RB12611	CENTER HOOK	
55	FF31718	PARALLEL PIN 1718	
56	RB12713	KEY B	
57	RB12612	SLEEVE GUIDE	
58	RB12615	SLEEVE B	
59	FF21234	W.S. PIN 3 X 12 CN65055	
60	RB12617	CUTTER RING	
61	RB12618	CUTTER RING GUIDE	
62	JJ21606	C-RING 15	
63	JJ80901	C-RING 11	
64	RB12714	BUMPER GUIDE	
65	RB12619	BUMPER	
66	EE39859	WASHER 11.1X23.4X2	
67	LL11756	BEARING 6803ZZ	
68	JJ21603	C-RING 20	
69	EE39865	WASHER 20X35X1	
70	LL41003	THRUST BEARING AXK1104	
71	RB12620	INTERNAL GEAR	
72	RB12720	D RING	
73	RB70699	TIP AXIS A UNIT	
74	RB70613	TWIST ASSY	
75	RB12622	PLANETARY GEAR	
76	RB70642	SUN GEAR UNIT	
77	RB12623	WASHER, TWIST AXIS	
78	RB70617	TWISTING MOTOR	
79	BB40425	BOLT 3X10	
80	FF51817	HOLLOW PIN 1817	
81	RB70684	MOTOR COVER UNIT	
82	EE32104	WASHER 2-3	
83	BB41706	BOLT 4X10	
84	RB12634	COVER L(441T)	
85	BB40310	HEX BOLT 5X16	
86	CC41104	HEX.NUT 1-3	
87	FF51710	HOLLOW PIN 1710	
88	CC49308	HEX. NUT M4	
89	RB12690	SPECIFICATION LABEL	
90	CC49411	SPECIAL NUT M5(REPLACES TA15554)	
91	FF51714	HOLLOW PIN 1714	
92	RB81353	FRAME L ASSY(441T)	
93	RB81280	MAIN CURCUIT BOARD UNIT	
94	RB12687	LABEL	
95	ZS00034	MAIN SWITCH UNIT(441)	
96	RB70626	POWER CORD ORANGE UNIT	
97	RB70637	SWITCH BASE ASSY	
98	RB70697	ELECTRODE UNIT	
99	AA05952	SCREW 2.6X10	

100	RB12674	MAGAZINE CAP	
101	RB70640	SENSOR CURCUIT BOARD F UNIT	
102	RB12673	MAGAZINE STOPPER SHAFT	
103	KK24186	COMPRESSION SPRING 4186	
104	RB12684	WIRE OPERATION LABEL	
105	JJ21601	C-RING 8	
106	FF52116	HOLLOW PIN 2116	
107	RB81286	MAGAZINE UNIT	
108	RB81294	MAGAZINE SUB ASSY	
109	EE39609	RUBBER WASHER 1.8X6X2	
110	KK34098	TORSION SPRING 4098	
111	FF43419	STEP PIN 3419	
112	RB12715	MAGAZINE PLATE	
113	RB12671	ROTARY SHAFT	
114	RB12672	MAGAZINE STOPPER	
115	FF21629	SPRING PIN 2X14	
116	RB81289	MAGAZINE COVER ASSY	
117	RB81284	MAGAZINE COVER UNIT	
118	AA05560	SCREW 3X12 CF	
119	HH14169	O-RING AS 568-003 1A	
120	EE39860	WASHER 5X2.6X1	
121	FF51713	HOLLOW PIN 1713	
122	RB12706	NOTICE LABEL	
123	KK34097	TORSION SPRING 4097	
124	RB12669	REEL PRESS	
125	FF31639	PARALLEL PIN 1639	
126	RB70641	SENSOR CURCUIT BOARD G UNIT	
127	AA31724	SCREW 2X8	
128	RB12667	MAGAZINE COVER CAP	
129	RB12688	441T LABEL	
130	RB12639	CURL GUIDE B	
131	RB70624	CURL GUIDE A UNIT	
132	FF51712	HOLLOW PIN 1712	
133	RB70666	WIRE GUIDE B UNIT	
134	RB12641	CURL GUIDE SHAFT	
135	KK34096	TORSION SPRING 4096	
136	RB12644	ARM C	
137	BB40810	BOLT 3X16	
138	RB12642	FIXED CUTTER	
139	RB12723	CON-ROD GUIDE B	
140	RB12721	CON-ROD COVER	
141	RB12722	CON-ROD GUIDE A	
142	RB12643	CUTTER	
143	RB12724	CON-ROD BASE	
144	FF51711	HOLLOW PIN 1711	
145	BB40717	BOLT 3X20 CF	
146	RB70682	ARM B UNIT	
147	EE39857	WASHER 3.2X11X1	
148	RB12637	ARM B	
149	EE39858	WASHER 3.2X7X1	

150	RB12645	CUTTER LEVER A	
151	RB12648	CUTTER PIN	
152	RB70683	CUTTER LEVER A UNIT	
153	RB12647	CUTTER SHAFT	
154	RB12649	CON-ROD	
155	RB12646	CUTTER LEVER B	
156	JJ10509	E-RING 4 CF	
157	KK33398	TORSION SPRING 3398	
158	RB70621	ARM B ASSY	
159	RB12663	SWITCH BLOCK	
160	KK24191	COMPRESSION SPRING 4191	
161	RB12815	WINDOW	
162	RB12080	TRIGGER (397)	
163	KK23656	COMPRESSION SPRING 3656	
164	RB12101	TRIGGER LOCK LEVER(397)	
165	RB70793	SWITCH HARNESS UNIT	WAS=RB70623
166	RB12665	RELEASE BUTTON BASE	
167	RB12664	RELEASE STOPPER	
168	RB12662	RELEASE BUTTON	
169	KK33401	TORSION SPRING 3401	
170	RB12725	SPONGE	
171	RB12635	COVER R(441T)	
172	RB12689	WARNING LABEL	
173	RB12661	BRAND PLATE	
174	BB40708	BOLT 5X25	
175	BB40716	BOLT 3X6 CF	
176	RB70629	FRAME R ASSY(441T)	
177	RB70616	JAW BASE ASSY	
178	RB12627	JAW B	
179	KK33249	TORSION SPRING 3249	
180	RB12625	JAW BASE	
181	FF41864	STEP PIN 1864	
182	RB12626	JAW A	
999	RB81184	BELT HOOK ASSY	
	XB95005	WS PIN JIG RB441T	
	XB95000	D RING JIG RB441T	
	RB70615	CARRYING CASE RB441T	