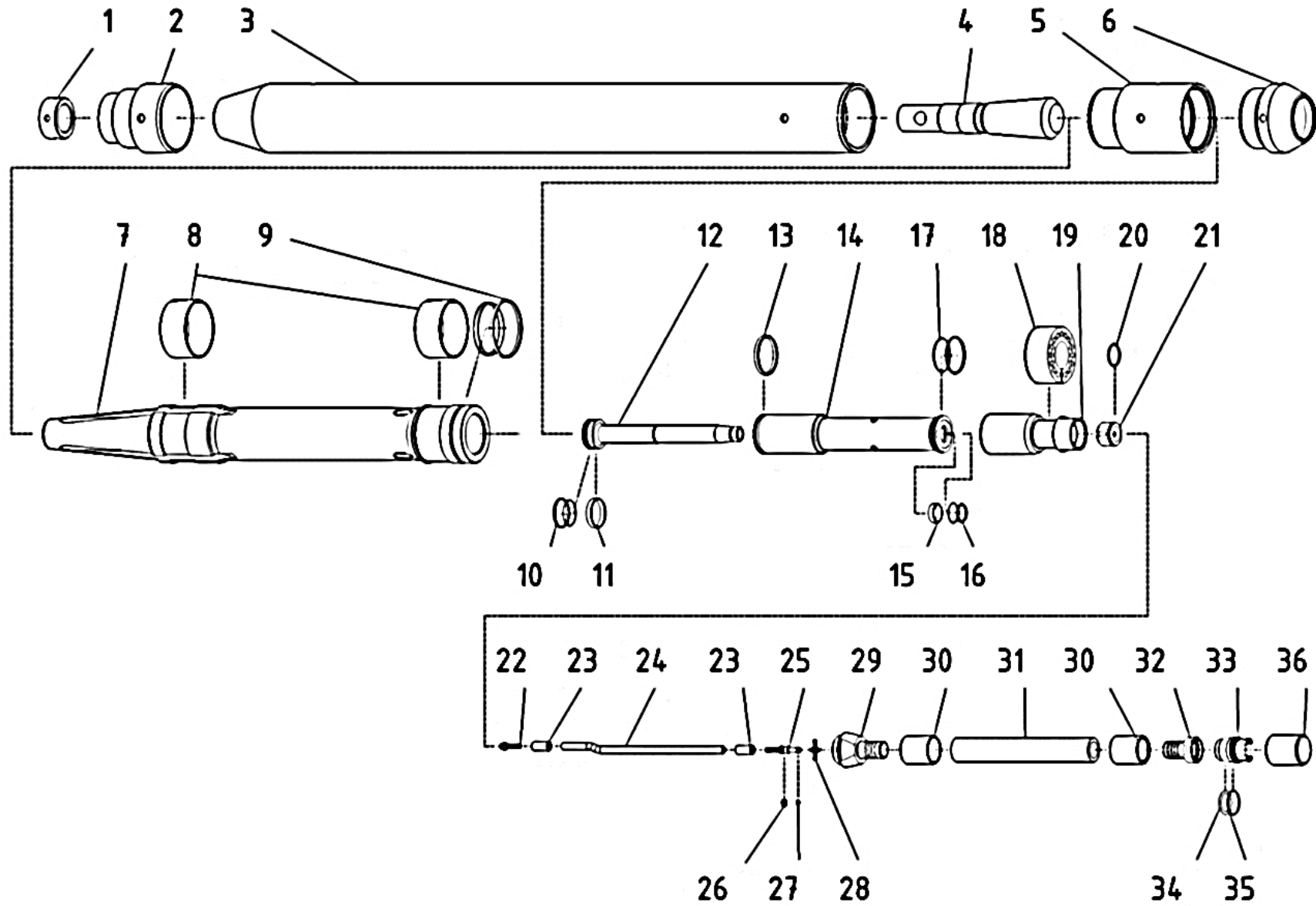




MAX K130S – Mole



Nr.	Name	Item number	QTY
1.	Stepped head nut	PMNAK-M130-00.09-M1	1
2.	Stepped head	PMNAS-M130-00.01	1
3.	Cylinder	PMCYL-M130-00.02-M5	1
4.	Chisel	PMPRZ-M130-00.08	1
5.	Control stud housing	PMTSR-M130-00.03	1
6.	Reverse cone with pulling eyes	WAHW130	1
7.	Impact piston	PMBIJ-M130-00.05-M4	1
8.	Piston teflon sliding tapes	PMPRB-M130-00.06	2
9.1.	Piston seal (Teflon)	PMUSB-M130-00.07	1
9.2.	Piston seal (O-ring 95x3)	MTSORSI0010	2
10.1.	Control rod teflon seal	PMUS1-S130-00.02	1
10.2.	Control rod seal (O-ring 45x3)	MTSORNB0043	1
11.	Control rod sliding tape I	PMPT1-S130-00.12	1
12.	Control rod	PMRUS-S130-00.03-M5	1
13.	Control piston teflon seal	PMUTS-S130-00.01	1
14.	Control piston	PMTLS-S130-00.13-M5	1
15.	Control rod sliding tape II	PMPT2-S130-00.04	1
16.1.	Control piston teflon seal III	PMUS2-S130-00.05	1
16.2.	Control piston seal III (O-ring 34x3)	MTSORNB0034	1
17.1.	Control piston teflon seal II	PMUS2-S130-00.06	1
17.2.	Control piston seal II (O-ring 60x3)	MTSORNB0052	1
18.	Elastic block	PMLST-S130-00.10	1
19.	Control cylinder	PMCYLSTR-S130-00.07-M5	1
20.	Splitter seal (O-ring 38x3)	MTSORNB0037	1
21.	Splitter	PMROS-S130-00.08	1
22.	Control hose connector	PMKWC-S130-00.09	1
23.	Control hose crimping ferrule M130, M160, M180	PMTULZW-W130-00.11-M1	2
24.	Control whip hose 0,30 m	MTSWG0006	m
25.	Control hose barbed coupling (male)	PMLWCM-W130-00.07	1
26.	Retaining ring (E-clip) M130, M160, M180	MMEMNPZ0002	1
27.	Control hose seal (O-ring 6x2)	MTSORNB0054	1
28.	Control hose cross spacer M130	PMWWC-W130-00.08	1



29.	Outer hose barbed connector	PMKWG-S130-00.11	1
30.	Outer hose crimping ferrule M130, M160, M180	PMTULZW-W130-00.10-M1	2
31.	Outer whip hose (0,245 m)	MTSWG0004	m
32.	Outer hose barbed coupling female M130	PMLWG-W130-00.04	1
33.	Outer hose quick coupler (male) M130, M160, M180	PMSRB-W130-00.05-M1	1
34.	Coupler seal (O-ring 36x5)	MTSORNB0036	1
35.	Coupler seal (O-ring 40,2x3)	MTSORNB0039	1
36.	Dirt cap (female)	PMZAZ-W130-00.06-M1	1
37.	Control whip hose, complete (Pos. 22, 23 x 2, 24 x 0.3, 25, 27, work)	PMOGC-S130-02.00	1
38.	Outer whip hose, complete (Pos. 29, 30 x 2, 31 x 0.245, 32, shrink, work)	PMOGC-S130-03.00	1
...	Shrink pipe RPK 55/16 for whip hoses M130, M160, M180	TMRPK55/016	1
...	Seal kit M130 basic (Pos. 8 x 2, 9, 13, 27)	WAUM130M	1
...	Seal kit M130 complete (Pos. 8 x 2, 9, 10, 11, 13, 15, 16, 17, 20, 27, 34, 35)	WAUK130	1