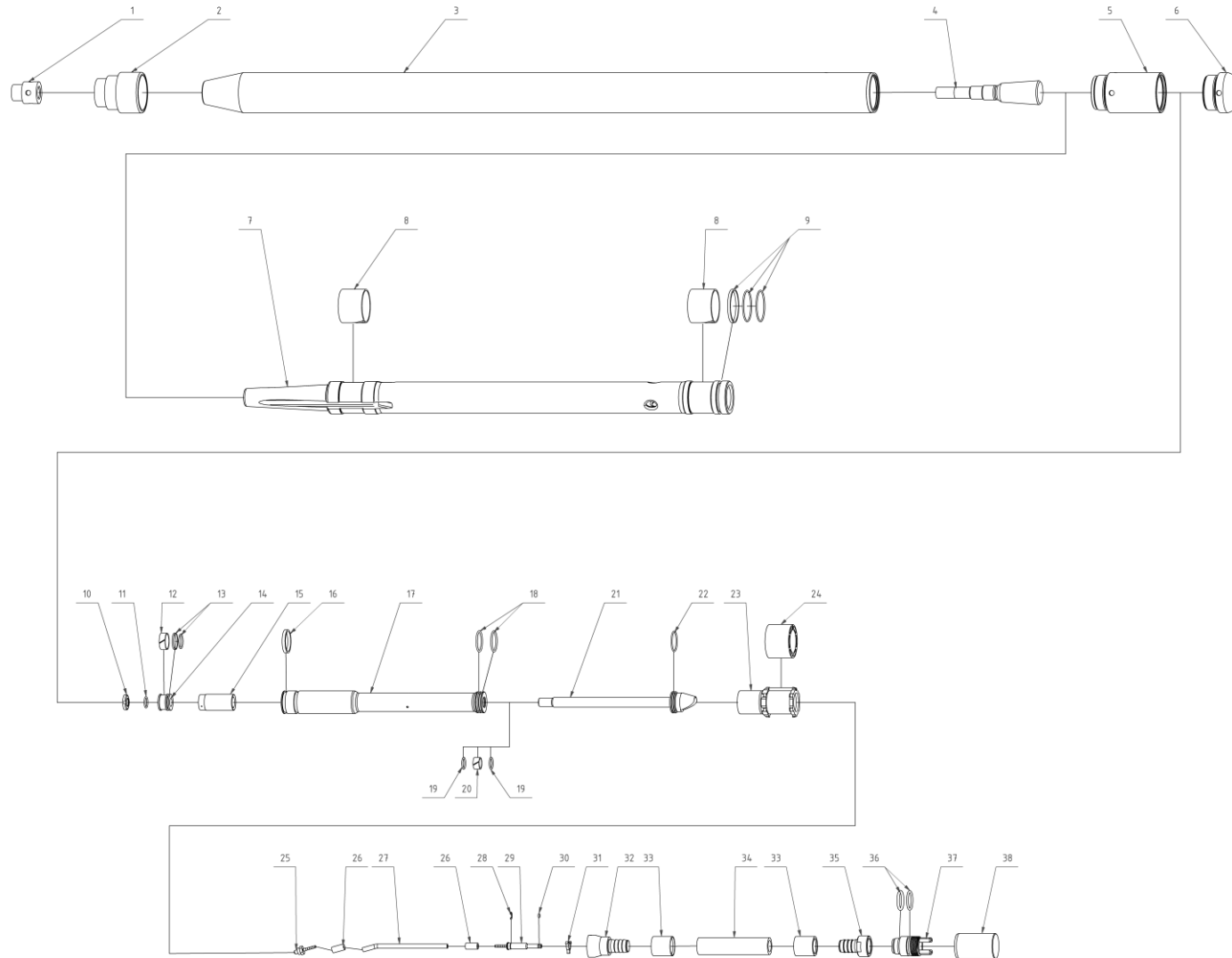




TERMA
SINCE 1990

MAX K65S - Mole





No.	Name	Item number	QTY
1.	Stepped head nut	PMNAK-M065K-00.09-M1	1
2.	Stepped head	PMNAS-M065K-00.01-M1	1
3.	Cylinder	PMCYL-M065S-00.02-M2	1
4.	Chisel	PMPRZ-M065K-00.08-M1	1
5.	Control stud housing	PMTSR-M065-00.03	1
6.	Reverse cone	PMWKR-M065-00.04-M1	1
7.	Impact piston	PMBIJ-M065S-00.05-M2	1
8.	Piston teflon sliding tapes	PMPRB-M065-00.06	2
9.1.	Piston seal (Teflon)	PMUSB-M065-00.07	1
9.2.	Piston seal (O-Ring 48x2)	MTSORSI0008	2
10.	Control rod nut	PMNKSP-S065-00.11	1
11.	Seal (O-Ring 15x2)	MTSORSI0001	1
12.	Inner piston sliding tape I	PMPT1-S065-00.03	1
13.1.	Inner piston teflon seal I	PMUS1-S065-00.04	1
13.2.	Inner piston seal I (O-Ring 20x2)	MTSORNB0219	1
14.	Inner piston	PMTLOK-S065-00.05	1
15.	Elastic damper	PMAMOR-S065-00.07	1
16.	Control piston teflon seal	PMUTS-S065-00.01	1
17.	Control piston	PMTLS-S065-00.02	1
18.	Control piston seal II (2x O-Ring 30x2,5)	MTSORNB0079	2
19.	Control piston seal III (2x O-ring 16x2)	MTSORSI0002	2
20.	Control rod sliding tape II	PMPT2-S065-00.10	1
21.	Control rod	PMRUS-S065-00.06	1
22.	Control cylinder seal (o-ring 30x2)	MTSORNB0033	1
23.	Control cylinder	PMCYLSTR-S065-01-00-M1	1
24.	Elastic block	PMLST-S065-00.09-M1	1
25.	Control hose connector	PMKWC-S055-02.01	1
26.	Control hose crimping ferrule M55, M65, M75	PMTULZW-W065-00.11	2
27.	Control whip hose 0,15 m	MTSWG0005	m
28.	Retaining ring (E-clip) ST6 M65/75	MMEMNPZ0001	1



29.	Control hose barbed coupling (male)	PMLWCM-W065-00.07	1
30.	Control hose seal (o-ring 3,6x1,8)	MTSORNB0031	1
31.	Control hose cross spacer M65, M75	PMWWC-W065-00.08	1
32.	Outer hose barbed connector	PMKWG-S065-00.08-M1	1
33.	Outer hose crimping ferrule fi19 M65, M75	PMTULZW-19-W065-00.10	2
34.	Outer whip hose (0,12 m)	MTSWG0003	m
35.	Outer hose barbed coupling female M65	PMLWG-W065-00.04-M1	1
36.1.	Coupler seal (O-Ring 24x4)	MTSORNB0075	1
36.2.	Coupler seal (O-Ring 26,2x3)	MTSORNB0029	1
37.	Outer hose quick coupler (male) M65	PMSRB-W065-00.05	1
38.	Dirt cap (female)	PMZAZ-W065-00.06	1
...	Shrink pipe RPK 40/12 for whip hoses M65, M75, M95	TMRPK40/012	1
...	Control whip hose, complete (Pos. 25, 26 x 2, 27 x 0.15, 28, 29, 30, work)	PMOGC-S065-02.00	1
...	Outer whip hose, complete (Pos. 32, 33 x 2, 34 x 0.12, 35, shrink, work)	PMOGC-S065-03.00	1
...	Seal kit M65 basic (Pos. 8 x 2, 9, 16, 30)	WAUM065M	1
...	Seal kit M65 complete (Pos. 8 x 2, 9, 11, 12, 13, 16, 18 x 2, 19 x 2, 20, 22, 30, 36)	WAUK065	1