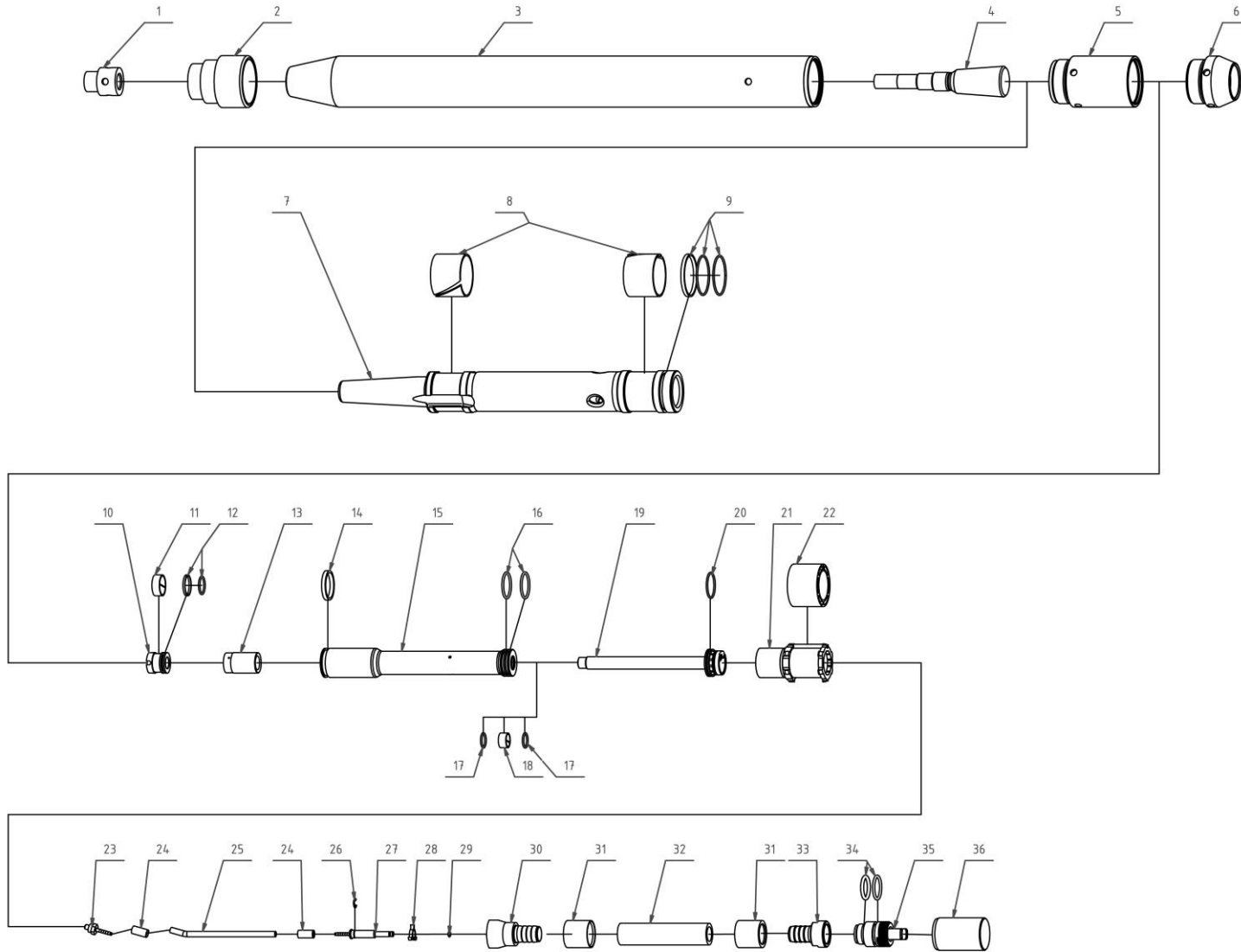




TERMA
SINCE 1990

MAX K65KS – Mole





No.	Name	Item number
1.	Stepped head nut	PMNAK-M065K-00.09-M1
2.	Stepped head	PMNAS-M065K-00.01-M1
3.	Cylinder	PMCYL-M065K-00.02-M2
4.	Chisel	PMPRZ-M065K-00.08-M1
5.	Control stud housing	PMTSR-M065K-00.03-M1
6.	Reverse cone	PMWKR-M065-00.04-M1
7.	Impact piston	PMBIJ-M065K-00.05-M1
8.	Piston teflon sliding tapes	PMPRB-M065-00.06
9.1.	Piston seal (Teflon)	PMUSB-M065-00.07
9.2.	Piston seal (O-Ring 48x2)	MTSORSI0008
10.	Inner piston	PMTLOK-S065K-00.05-M1
11.	Inner piston sliding tape I	PMPT1-S065-00.03
12.1.	Inner piston teflon seal I	PMUS1-S065-00.04
12.2.	Inner piston seal I (O-Ring 20x2)	MTSORN0219
13.	Elastic damper	PMAMOR-S065K-00.07-M1
14.	Control piston teflon seal	PMUTS-S065-00.01
15.	Control piston	PMTLS-S065K-00.02-M1
16.	Control piston seal II (2x O-Ring 30x2,5)	MTSORN0079
17.	Control piston seal III (2x O-ring 16x2)	MTSORSI0002
18.	Control rod sliding tape II	PMPT2-S065-00.10
19.	Control rod	PMRUS-S065K-00.06-M1
20.	Control cylinder seal (o-ring 30x2)	MTSORN0033
21.	Control cylinder	PMCYLSTR-S065K-01.00-M1
22.	Elastic block	PMLST-S065-00.09-M1
23.	Control hose connector	PMKWC-S055-02.01
24.	Control hose crimping ferrule M55, M65, M75	PMTULZW-W065-00.11
25.	Control whip hose 0,15 m	MTSWG0005
26.	Retaining ring (E-clip) ST6 M65/75	MMEMNPZ0001
27.	Control hose barbed coupling (male)	PMLWCM-W065-00.07
28.	Control hose cross spacer M65, M75	PMWWC-W065-00.08
29.	Control hose seal (o-ring 3,6x1,8)	MTSORN0031



30.	Outer hose barbed connector	PMKWG-S065-00.08-M1
31.	Outer hose crimping ferrule fi19 M65, M75	PMTULZW-19-W065-00.10
32.	Outer whip hose (0,12 m)	MTSWG0003
33.	Outer hose barbed coupling female M65	PMLWG-W065-00.04-M1
34.1.	Coupler seal (O-Ring 24x4)	MTSORN0075
34.2.	Coupler seal (O-Ring 26,2x3)	MTSORN0029
35.	Outer hose quick coupler (male) M65	PMSRB-W065-00.05
36.	Dirt cap (female)	PMZAZ-W065-00.06
...	Shrink pipe RPK 40/12 for whip hoses M65, M75, M95	TMRPK40/012
...	Control whip hose, complete (Pos. 25, 26 x 2, 27 x 0.15, 28, 29, 30, work)	PMOGC-S065-02.00
...	Outer whip hose, complete (Pos. 32, 33 x 2, 34 x 0.12, 35, shrink, work)	PMOGC-S065-03.00
...	Seal kit M65 basic (Pos. 8 x 2, 9, 14, 29)	WAUM065M
...	Seal kit M65 complete (Pos. 8 x 2, 9, 11, 12, 14, 16 x 2, 17 x 2, 18, 20, 29, 34)	WAUK065KS